



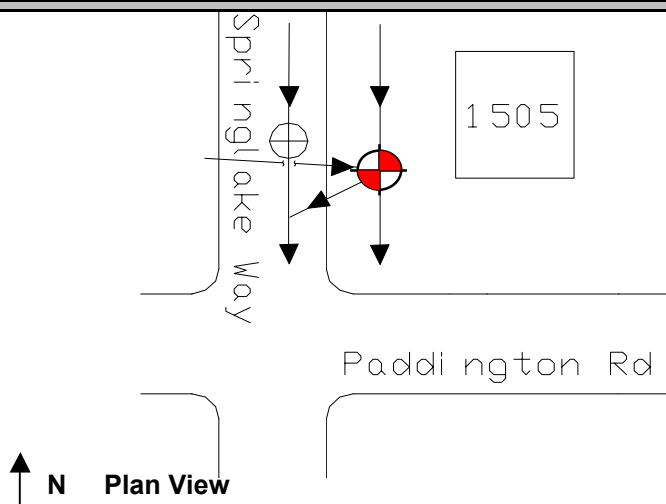
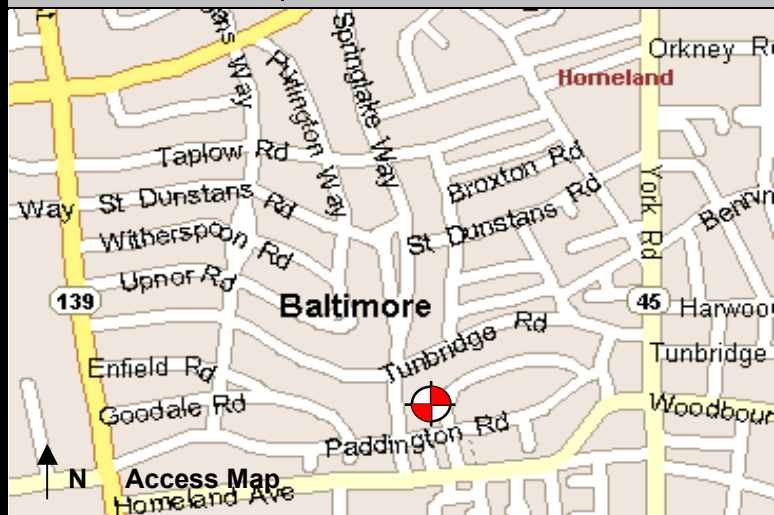
a division of ADS Corporation

Baltimore SSO

Site Investigation Report

FM Initials: DF
Project Number: 05 Stony Run

Site Name:	05_129S	Monitor Series:	4000	Monitor S/N:	1165	Manhole #:	JGFB10	Investigation Information: Upstream Input: (L/S, P/S) N/A Upstream Manhole: JGFB09 Downstream Manhole: JGFB11 Depth of Flow: 3.25" Description of Site Hydraulics:
Address / Location:	1505 Springlake Way	Map Page #:	3	Map Grid #:	33UU ₁			
		Pipe Height:	11.13"	Pipe Width:	11.13"			
		IP Address:	166.142.224.170					
Access:	Drive	GPS Coords:	N DD.dddd 39 21.304	W DD.dddd 76 36.918				
Date/Time of Investigation:	4/7/2003 0:00							



Constant wave observed.

Manhole Information:



Manhole Depth: 11'5"
Manhole Material / Condition: Brick
Brick/Good
Active Drop Connections?
No

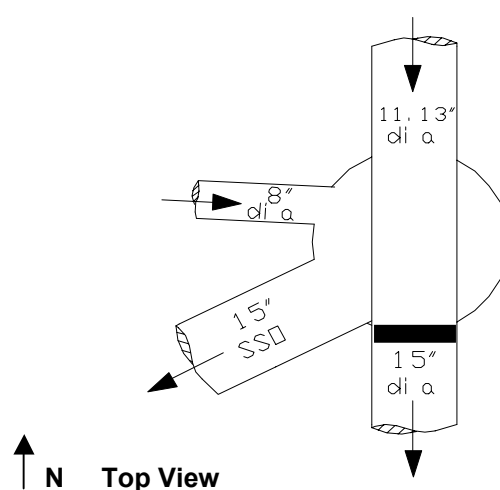
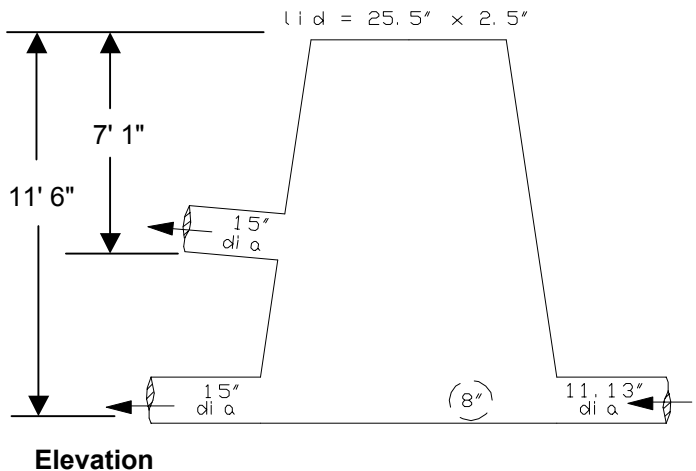
System Character:

Residential
☒ Commercial
Industrial

Notes:

Legend:

 Cast Iron Flap Valve
 Sensor Location
N.T.S.- Not to scale



The monitoring period ended on October 31, 2004.